



# HOMEGUARDCARE

User Guide

Windows

## Contents

1. HomeguardCare Introduction .....	3
2. Operational Requirements .....	3
3. HomeguardCare Installation .....	3
4. HomeguardCare Application .....	4
5. Device List Menu .....	4
5.1 Add Device .....	4
5.1.1 Search to add device in LAN .....	5
5.1.2 Add device manually .....	5
5.2 Edit Device .....	6
5.3 Delete Device .....	6
5.4 Device right-click Menu .....	7
6. View Video and Video Setting .....	8
6.1 Play Video .....	8
6.2 Audio&Video/Image parameters/PTZ control .....	8
7. Local Menu .....	9
7.1 System Setting .....	9
7.1.1 Trigger alarm .....	9
7.1.2 Play automatically after launching the software .....	9
7.1.3 Default Record Plan .....	10
8. Operation Log and Alarm Management .....	10
9. Playback and Query Recorded Video .....	11

## 1. HomeguardCare Introduction

HomeguardCare is a wireless IP camera centralization management software. It provides the central control of monitoring, video capture, record, alarm detection, etc for multiple IP cameras on LAN or WAN.

HomeguardCare supports installation and operation on a Windows system.

HomeguardCare features:

- Support P2P camera connection
- Support DDNS connection
- Support international language switching
- Support local scheduled recording
- Support alarm recording and snapshot
- Support monitoring and talking
- Support image setting
- Support PTZ setting
- Customized change skin

## 2. Operational Requirements

For stable operation of HomeguardCare, the following minimum system parameters are suggested:

- CPU: Dual core CPU
- RAM: above 1G
- Hard Disk: above 500G
- OS: Windows XP or above
- Monitor resolution:  $\geq 1024*768$

## 3. HomeguardCare Installation

Obtain HomeguardCare installation software:

- Obtain the software from attached CD
- Download the software from our website

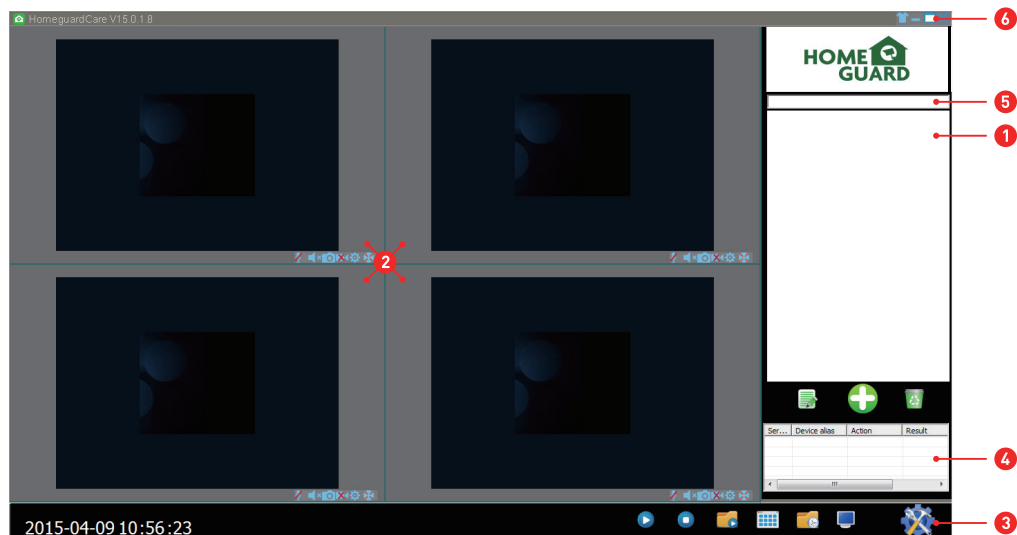
Please create desktop shortcut icon when installing the HomeguardCare.



**HomeguardCare**

## 4. HomeguardCare Application

Double click the HomeguardCare desktop shortcut icon to run the HomeguardCare, it shown as below.



- ① Camera list area
- ② View video and video setup area
- ③ Local Menu setting area
- ④ Camera operation log
- ⑤ Search bar
- ⑥ System language switching functions etc

## 5. Device List Menu

### 5.1 Add Device

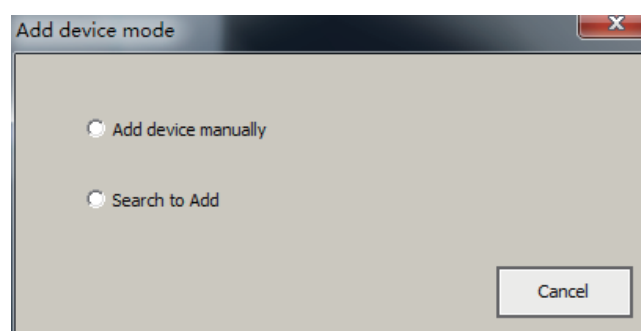


Figure 2

### 5.1.1 Search to add device in LAN

Select “Search to Add” to access search interface, and then select corresponding device type to search, fill in correct username and password in searched device and save as Figure 3.

**Tips:** The device will be displayed in device list after saving.

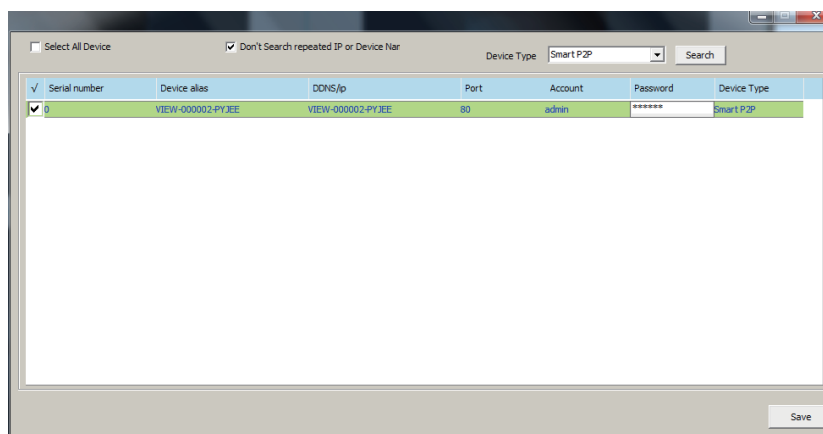


Figure 3

### 5.1.2 Add device manually

Select “Add device manually” to access add interface, the item marked \* must be filled as Figure 4.

**Tips:** please select correct Device Type when you add camera.

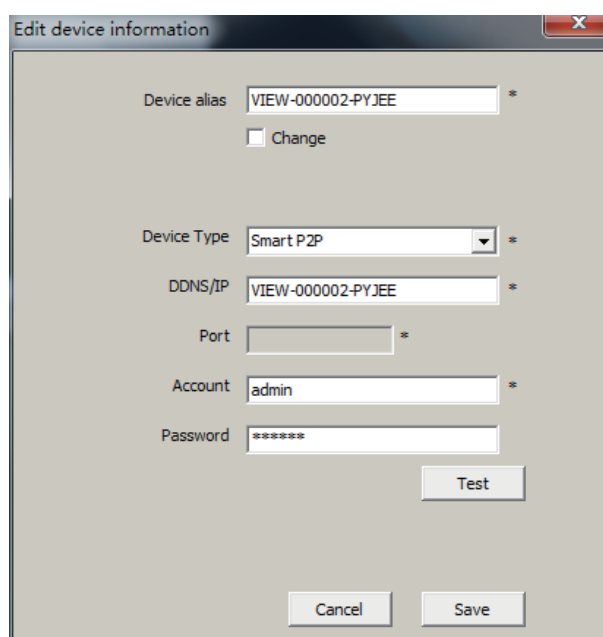
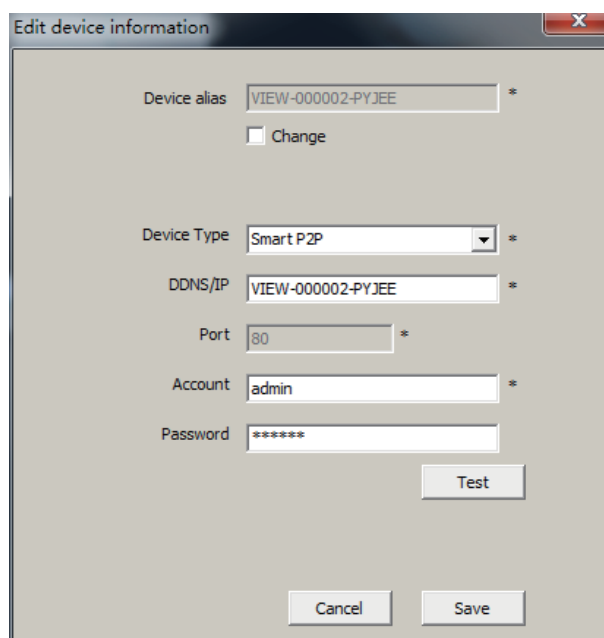


Figure 4

## 5.2 Edit Device



Select the camera added in device list, click Edit Device button to set up user management parameters as Figure 5.



The dialog box titled "Edit device information" contains the following fields and controls:

- Device alias:** A text field containing "VIEW-000002-PYJEE" with an asterisk (\*) indicating it is required. Below it is a checkbox labeled "Change".
- Device Type:** A dropdown menu showing "Smart P2P" with an asterisk (\*) indicating it is required.
- DDNS/IP:** A text field containing "VIEW-000002-PYJEE" with an asterisk (\*) indicating it is required.
- Port:** A text field containing "80" with an asterisk (\*) indicating it is required.
- Account:** A text field containing "admin" with an asterisk (\*) indicating it is required.
- Password:** A text field containing "\*\*\*\*\*" with an asterisk (\*) indicating it is required.
- Buttons:** "Test", "Cancel", and "Save" buttons are located at the bottom right of the dialog.

Figure 5

## 5.3 Delete Device



Select the camera added in device list, click Delete Device button to delete the device.

## 5.4 Device right-click Menu

Select the camera added in device list, right click it, it will pop up Right-click Menu as Figure 6.

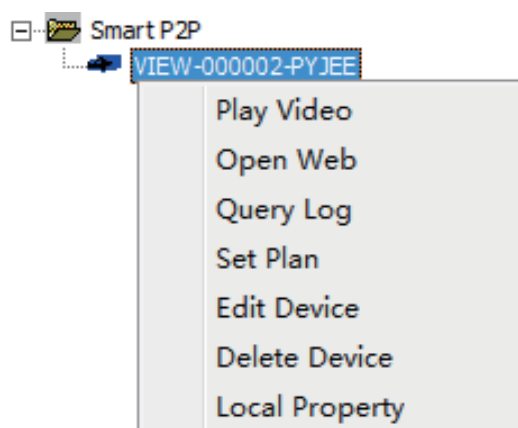


Figure 6

### Query Log:

query operation log and alarm log of the camera, same as section 8.

### Set Plan:

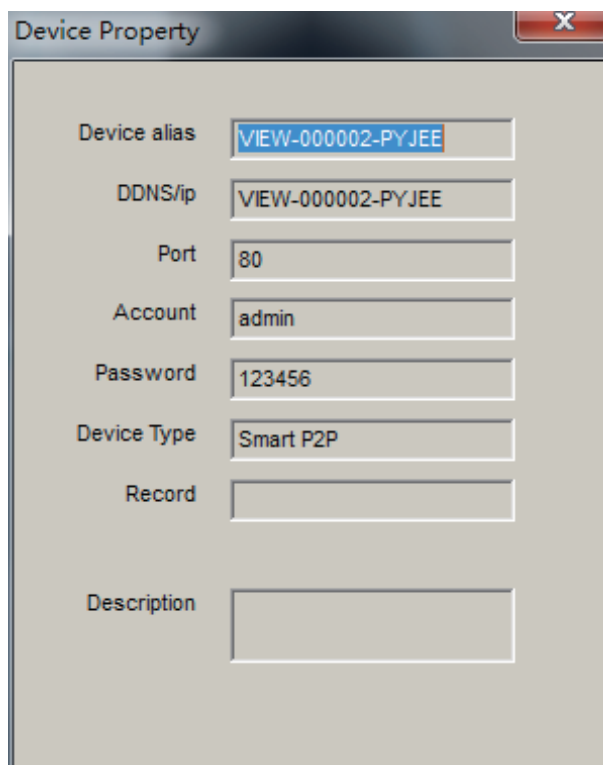
You can perform single camera recording plan after adding recording plan.(need to add “default record plan” in system setting, then you set up it, detail see section 7.1.3).

### Edit Device:

the function same as 5.2 Edit Device.

### Local Property:

view information of selected device as Figure 7.



The image shows a 'Device Property' dialog box with the following fields:

- Device alias: VIEW-000002-PYJEE
- DDNS/ip: VIEW-000002-PYJEE
- Port: 80
- Account: admin
- Password: 123456
- Device Type: Smart P2P
- Record: (empty field)
- Description: (empty field)

Figure 7

### Tips:

Right click any here, it will pop up a menu as Figure 8 when you don't select any camera, then you can use one key to perform all operation.

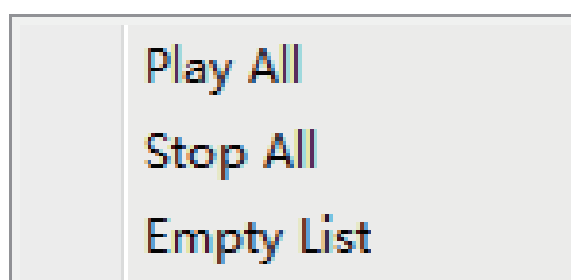


Figure 8

## 6. View Video and Video Setting Menu

### 6.1 Play Video

Select the camera you want to play in device list, right click "Play Video" or double click to play the video as Figure 9.



Figure 9

### 6.2 Audio&Video/Image parameters/PTZ control

You can perform monitoring, talking, snapshot, record, image parameter setting and PTZ control etc when viewing video.



Talking button



Monitoring button



Snapshot button



Record and status display



indicate record manually



indicate scheduled record



Image Parameters Setting button, the setting of image parameters may be different due to camera model or series as Figure 10.



PTZ control button

↑ ↓ ← → ✖ Up, Down, Left, Right, cruise vertically, horizontally and center.

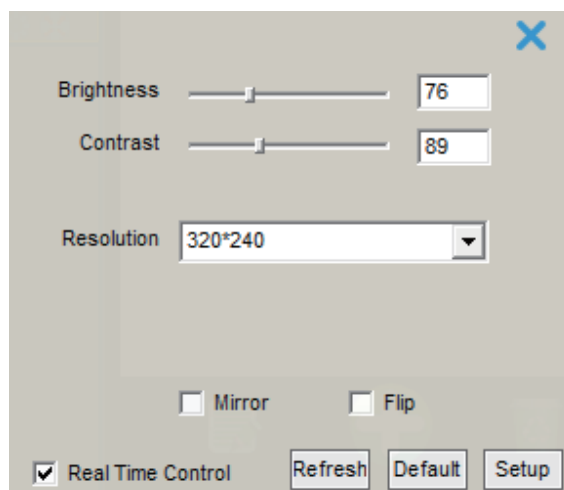









Figure 10



## 7. Local Menu

- |   |                                |   |                                 |
|---|--------------------------------|---|---------------------------------|
|  | Play all device in device list |  | Close all device in device list |
|  | Eyeplayer                      |  | Multiple image window option    |
|  | Manage device Log              |  | Full screen mode                |
|  | System Setting                 |   |                                 |

### 7.1 System Setting



You can set up snapshot, alarm recording, recording save path, play automatically after reboot and recording plan here as Figure 11.

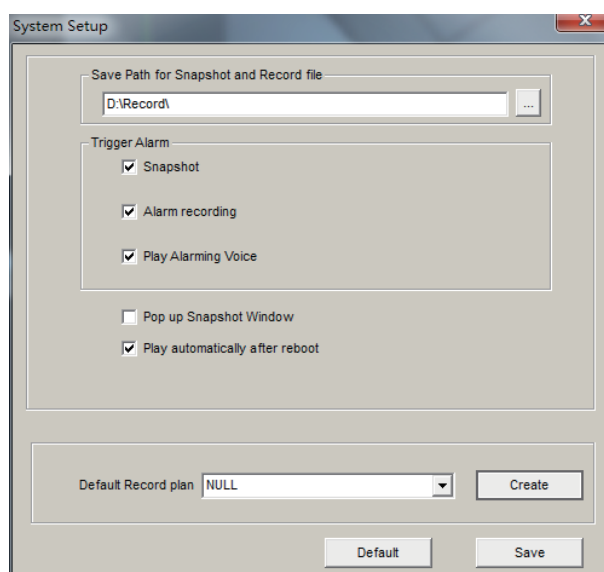


Figure 11

#### 7.1.1 Trigger alarm

It supports snapshot, alarm recording and Play Alarming Voice.



**Tips:**

Only after setting the alarm on the camera (motion detection/alarm) can the local "Alarm triggering" of HomeguardCare be executed successfully.

#### 7.1.2 Play automatically after launching the software

Ticked "Play automatically after reboot", it will connect automatically and play the cameras in device list after reboot the software.

### 7.1.3 Default Record Plan

You need to create recording plan to set it up when you use local record plan; record status indicate as  record manually,  record plan, shown as Figure 12.

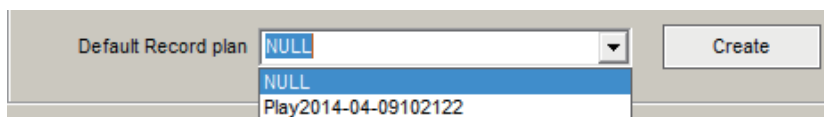


Figure 12

#### Tips:

You need to select record property when creating record plan, consider if cover the recording or stop recording after the space is full, shown as Figure 13.

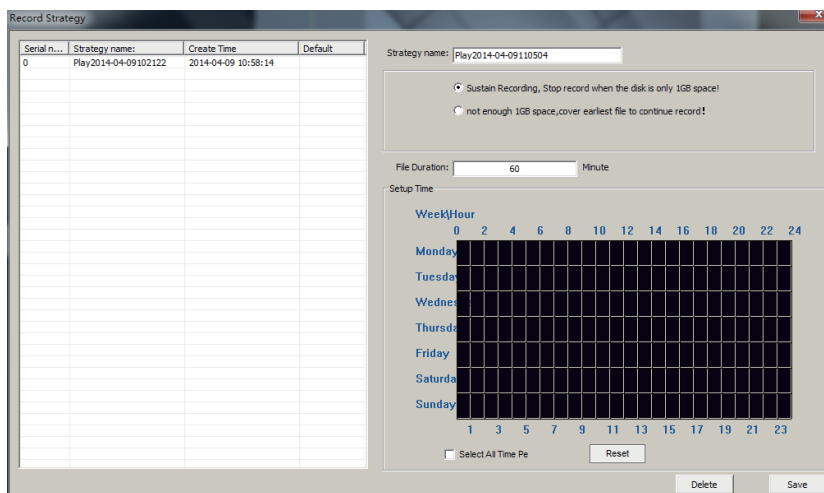


Figure 13

## 8. Operation Log and Alarm Management



Device log and alarm manage log icon

You can query work log and alarm log for a camera, example for, what time is it played video, what time is it closed video as Figure 14.

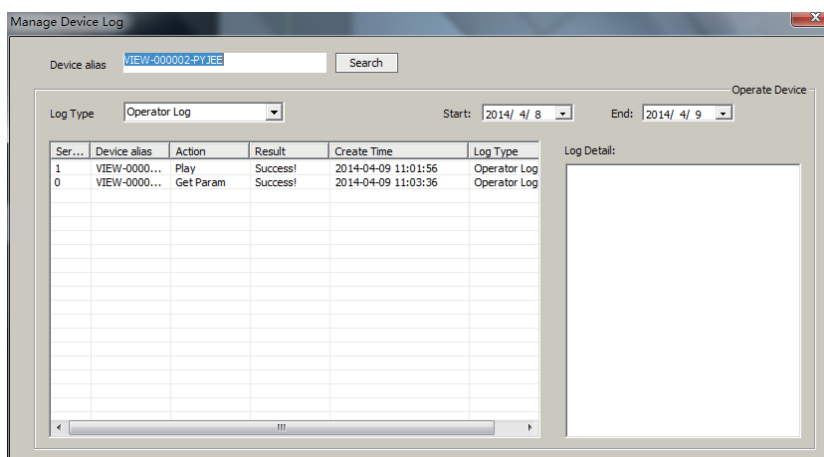



Figure 14

## 9. Playback and Query Recorded Video

 Device log and alarm manage log icon

Launch Eyeplayer, the user can check recording file of each camera by recording path as Figure 15.

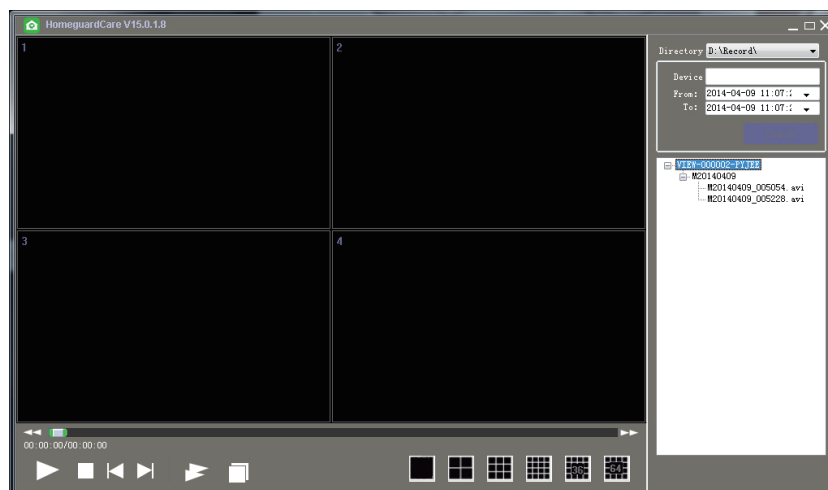


Figure 15

— The End —



## Helpdesk / Technical Support

✉ [support@homeguardworld.com](mailto:support@homeguardworld.com)  
🌐 [www.homeguardworld.com/support](http://www.homeguardworld.com/support)

HGWIP710-818-6W-030916 | © HOMEGUARD 2015